

# RACIAL + ETHNIC DIVERSITY DATA

GPJ Eff. Aug 27, 2020



GEORGE P. JOHNSON  
experience marketing

# 2020 Employee Population by Race, Ethnicity

GEORGE P. JOHNSON		UNITED STATES		
Total Population (2020)		Total Population (2010 census data)		
686		327,167,439		
Ethnic Identity	Number of People	Percentage of Population	Number of People	Percentage of Population
Hispanic/Latinx (of any race)	44	6.41%	59,763,631	18.27%
White alone	552	80.47%	197,033,939	60.22%
Black / African American alone	15	2.19%	40,305,870	12.32%
American Indian / Alaska Native alone	0	—	2,180,266	.67%
Asian alone	54	7.87%	18,193,513	5.56%
Native Hawaiian / other Pacific Islander alone	4	.58%	559,945	.17%
Some other race alone	0	—	826,107	.25%
Two or more races	17	2.48%	8,304,168	2.54%

# 2020 Employee Population by Gender\*\*

GEORGE P. JOHNSON		
Total Population (2020)		
<b>686</b>		
Gender Identity	Number of People	Percentage of Population
Male	<b>274</b>	<b>40%</b>
Female	<b>412</b>	<b>60%</b>

UNITED STATES		
Total Population (2010 census data)		
<b>327,167,439</b>		
Gender Identity	Number of People	Percentage of Population
Male	<b>161,118,151</b>	<b>49.25%</b>
Female	<b>166,049,288</b>	<b>50.75%</b>

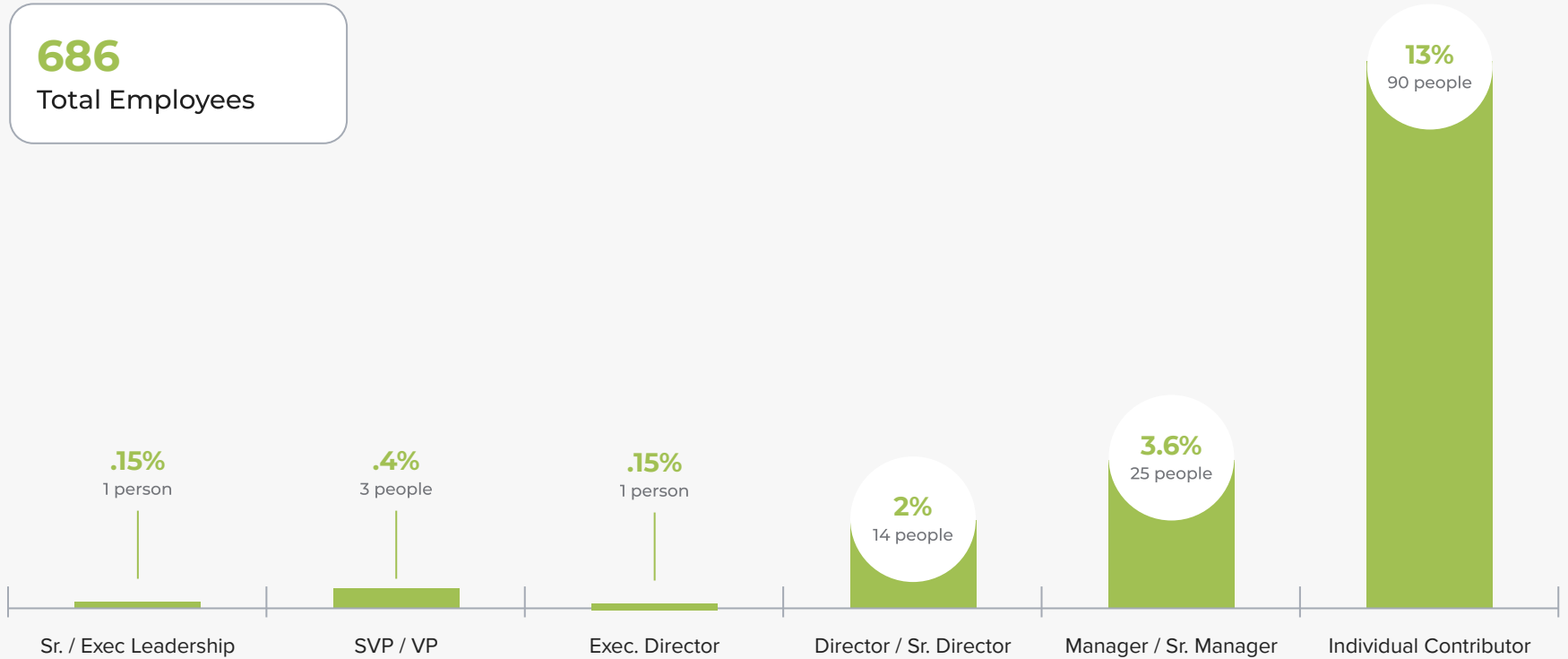
\*\*Note: Our male / female gender classification is based on EEO-1 categories to align with federal reporting requirements. This categorization does not reflect our opinion, as we believe that gender is non-binary.

# DATA BY CAREER LEVEL

# 2020 GPJ BIPOC / Multicultural Employees by Career Level

686

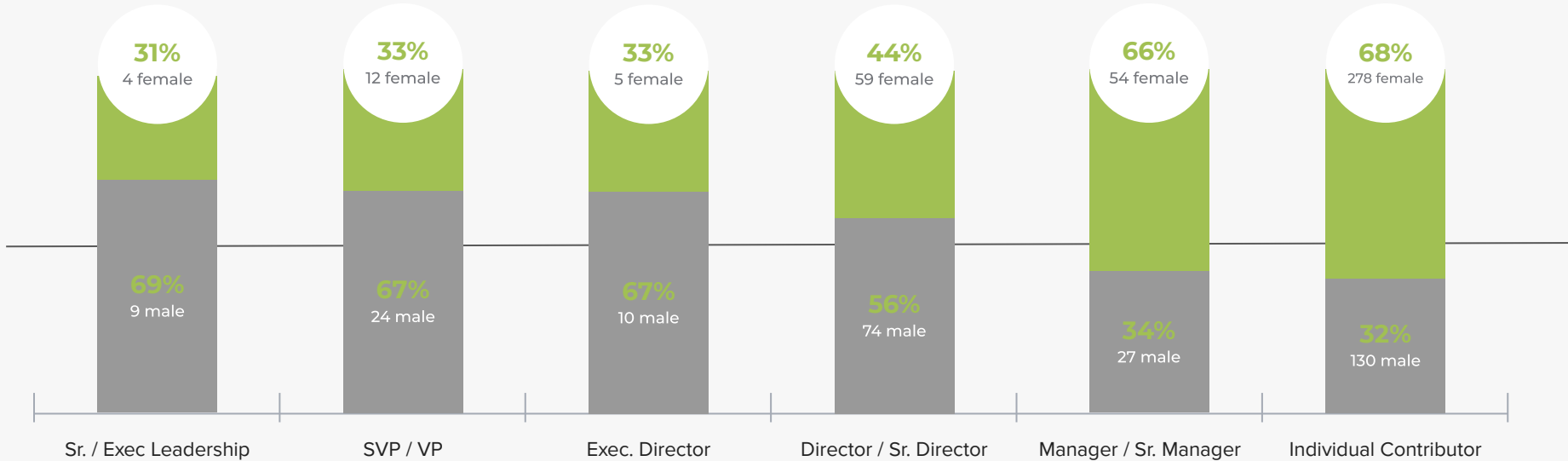
Total Employees



# 2020 GPJ Employees by Gender\* and Career Level

686

Total Employees



\*Note: Our male / female gender classification is based off of EEO-1 categories to align with federal reporting requirements. This categorization does not reflect our opinion, as we believe that gender is non-binary.